



ECHO™

RANGE INTRODUCTION

Imagine switch technology and automated systems that need no wiring, use no batteries and are effortless to install and commission. Echo™ is an innovative range of entirely wireless, batteryless and self-powered switches and controls which can work together offering even more convenience and energy saving opportunities.

Echo™ enables you to create your own automated control system for a domestic or commercial environment. With the ability to incorporate a range of transmitters from switches and presence detectors, alongside a range of receivers, the installer can create a flexible system which can deliver safety, comfort, cost savings and energy efficiency for the building owner or user.

The MK Echo™ portfolio is enabled by EnOcean technology. EnOcean based products make use of the energy generated by slight changes in pressure, light levels or temperature, to provide self-powered, batteryless and wireless solutions. This technology is used by many world leading manufacturers, products from these companies can be used together to provide solutions for energy efficient buildings which are more flexible and cost efficient to design, build and operate.

To find out more visit www.mkelectric.co.uk.

FEATURES & BENEFITS

WIRELESS

Instant installation and location flexibility, reducing disruption and cost, as there is no need to run switching cables.

SELF-POWERED

Innovative patented technology to 'harvest' energy means zero maintenance as there are no batteries to change.

ULTIMATE FLEXIBILITY

Each receiver can be controlled by up to 32 switches/transmitters.

ENERGY SAVINGS

With additional local control, alongside the use of presence detectors users can create an energy efficient environment.

HOW TO SPECIFY

A range of switches and controls which are self powered and to be enabled by EnOcean technology. Transmitters to be totally wireless and batteryless, with no direct connection to the final circuit. All transmitter modules to be available in a range of aesthetics and finishes which match to other required wiring accessories. Receivers to have the ability to be controlled by up to 32 switches/transmitters. All products to be manufactured in Europe.

Echo™

APPLICATION EXAMPLE: HOTEL BEDROOM

In this example the installer is able to create an automated system ensuring comfort for the guest, whilst delivering energy efficiency and cost savings for the hotel without disturbing the fabric of the room. In addition, with wireless transmitters, the layout and positioning is completely flexible and can be changed quickly without disruption.

The guest is able to easily control their local environment from a number of locations within the room. A 2 channel transmitter by the entry doorway enables control of both the bedroom and living area lighting. An additional 4 channel transmitter next to the bed gives further control of the bedroom and living area lighting and an all off function. There is additional control in the bathroom and on the balcony.

The hotel is able to control all lighting, heating and cooling by the card switch transmitter, ensuring guests do not leave lighting or air conditioning on when they leave the room. The hotel is also able to ensure a safe environment; the presence detector can be programmed to turn low level lighting on when a guest enters the room. In addition the presence detector can be programmed to turn lighting off, or dim to a low level when no presence is detected in the room but the card switch is still in place. Door contacts ensure the air conditioning is not in use whilst the balcony doors are open, offering further energy savings.



WIRELESS



BATTERYLESS



SELF-POWERED



SWITCH RECEIVER



PLUG-THROUGH SWITCH RECEIVER

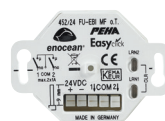


4 CHANNEL TRANSMITTER

- 1 - Living area lights
- 2 - Bedroom lights
- 3 - Plug-through light
- 4 - All off



1 CHANNEL TRANSMITTER



SWITCH RECEIVER

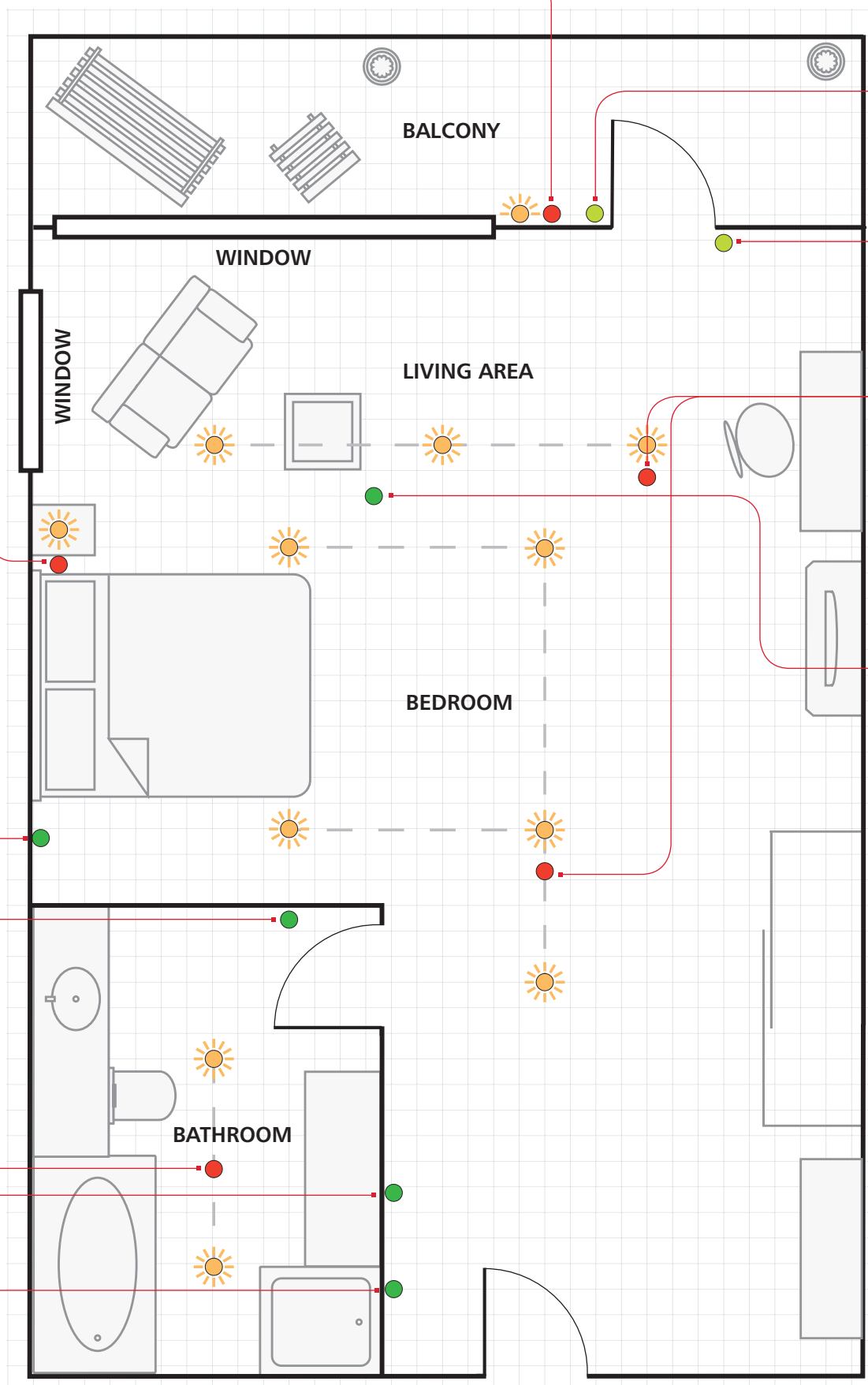


2 CHANNEL TRANSMITTER

- 1 - Bedroom Lights
- 2 - Living area



CARD TRANSMITTER



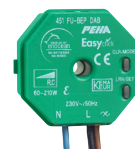
1 CHANNEL
IP66
TRANSMITTER



DOOR CONTACT



DIMMER
RECEIVER



PRESENCE
DETECTOR



KEY

● LIGHT

● TRANSMITTER

● RECEIVER

Modular Transmitters

1 CHANNEL
MODULAR
TRANSMITTER



2 CHANNEL
MODULAR
TRANSMITTER



MODULAR
CARD SWITCH
TRANSMITTER



FINISHES

WHITE

K5786WHI

1

K5789WHI

1

K5744CWHI

1

BLACK

K5786BLK

1

K5789BLK

1

K5744CBLK

1

ALUMINIUM

K5786ALU

1

K5789ALU

1

K5744CALU

1

For use with K5776, K5779 frames and K5412 locator.

OPERATING FREQUENCY

868.3Mhz

IP RATING

IP2 x D

DIMENSIONS

55 x 55mm

ETSI EN 301489-1/3

ETSI EN 300220-1/2

For use with K5776, K5779 frames and K5412 locator.

OPERATING FREQUENCY

868.3Mhz

IP RATING

IP2 x D

DIMENSIONS

55 x 55mm

ETSI EN 301489-1/3

ETSI EN 300220-1/2

For use with K5776, K5779 frames and K5412 locator.

OPERATING FREQUENCY

868.3Mhz

IP RATING

IP2 x D

DIMENSIONS

55 x 55mm

ETSI EN 301489-1/3

ETSI EN 300220-1/2

MOUNTING SWITCH TRANSMITTERS: All can be mounted directly to the wall surface – screws supplied.

All can be mounted to back boxes – screws supplied.

Logic Plus™ and Aspect type transmitters can also be mounted using supplied adhesive pads





Modular Frames

1G FRAME
GLOSSY FINISH

2G FRAME
GLOSSY FINISH

1G FRAME
GLOSSY FINISH

2G FRAME
GLOSSY FINISH

FINISHES			FINISHES		
WHITE	K5776WHI 1	K5779WHI 1	GLASS, BLACK	K5776GLAB 1	K5779GLAB 1
BLACK	K5776BLK 1	K5779BLK 1	GLASS, GREEN	K5776GLAG 1	K5779GLAG 1
ALUMINIUM	K5776ALU 1	K5779ALU 1	GLASS, ALUMINIUM	K5776GLAA 1	K5779GLAA 1
			GLASS, GROOVED ALUMINIUM	K5776GLAGA 1	K5779GLAGA 1

For use with K5412 locator and K5786, K5789, K5744, K5744C transmitters.
Surface mount installation only.

DIMENSIONS
83 x 83mm

For use with K5412 locator and K5786, K5789, K5744, K5744C transmitters.
Surface mount installation only.

DIMENSIONS
83 x 154mm

For use with K5412 locator and K5786, K5789, K5744, K5744C transmitters.
Surface mount installation only.

DIMENSIONS
85 x 85mm

For use with K5412 locator and K5786, K5789, K5744, K5744C transmitters.
Surface mount installation only.

DIMENSIONS
85 x 157mm

MOUNTING SWITCH TRANSMITTERS: All can be mounted directly to the wall surface – screws supplied.

All can be mounted to back boxes – screws supplied.

Logic Plus™ and Aspect type transmitters can also be mounted using supplied adhesive pads

Transmitters

Logic Plus™

1 CHANNEL
TRANSMITTER2 CHANNEL
TRANSMITTER

FINISHES

WHITE

K4786WHI

1

K4789WHI

1

GRAPHITE

K4786GRA

1

K4789GRA

1

OPERATING FREQUENCY
868.3Mhz
IP RATING
IP2 x D
DIMENSIONS
86 x 86mm
ETSI EN 301 489-1 + -3 :
ESTI EN 300 220-3

OPERATING FREQUENCY
868.3Mhz
IP RATING
IP2 x D
DIMENSIONS
86 x 86mm
ETSI EN 301 489-1 + -3 :
ESTI EN 300 220-3

Aspect

1 CHANNEL
TRANSMITTER2 CHANNEL
TRANSMITTER

FINISHES

BRUSHED STAINLESS STEEL

K23476BSS*

1

K23477BSS*

1

LACQUERED BRUSHED STEEL

K23476LBS*

1

K23477LBS*

1

BRUSHED CHROME

K23476BRC*

1

K23477BRC*

1

POLISHED CHROME

K23476POC*

1

K23477POC*

1

SATIN GOLD

K23476SAG*

1

K23477SAG*

1

PORCELAIN WHITE

K23476WHIW

1

K23477WHIW

1

LUSTROUS IVORY

K23476LIVW

1

K23477LIVW

1

LUSTROUS BLACK

K23476LBKB

1

K23477LBKB

1

POLISHED BRASS

K23476PBR*

1

K23477PBR*

1

TEXTURED IRON

K23476TIRB

1

K23477TIRB

1

DESERT BRONZE

K23476DBZB

1

K23477DBZB

1

ANTIQUE BRASS

K23476ABSB

1

K23477ABSB

1

TEXTURED COPPER

K23476TCOB

1

K23477TCOB

1

* Available with the option of either White or Black inserts. Add Suffix 'W' or 'B' to part number when ordering, E.g. KxxxxBSSW.

Where there is no asterisk, the final suffix W = White Insert, B = Black Insert, E.g. KxxxxWHIW = Porcelain White finish with White inserts

LEAD TIMES
Please contact our Customer
Services Department on:
01268 563 404

OPERATING FREQUENCY
868.3Mhz
IP RATING
IP2 x D
DIMENSIONS
86 x 86mm
ETSI EN 301 489-1 + -3 :
ESTI EN 300 220-3

OPERATING FREQUENCY
868.3Mhz
IP RATING
IP2 x D
DIMENSIONS
86 x 86mm
ETSI EN 301 489-1 + -3 :
ESTI EN 300 220-3

MOUNTING SWITCH TRANSMITTERS: All can be mounted directly to the wall surface – screws supplied. All can be mounted to back boxes – screws supplied. Logic Plus™ and Aspect type transmitters can also be mounted using supplied adhesive pads

Edge™

1 CHANNEL
TRANSMITTER



2 CHANNEL
TRANSMITTER



Albany Plus™

1 CHANNEL
TRANSMITTER



2 CHANNEL
TRANSMITTER



K13476BSS*	1	K13477BSS*	1	K4766BSS	1	K4767BSS	1
K13476LBS*	1	K13477LBS*	1				
K13476BRC*	1	K13477BRC*	1	K4766BRC	1	K4767BRC	1
K13476POC*	1	K13477POC*	1	K4766PCR	1	K4767PCR	1
K13476SAG*	1	K13477SAG*	1	K4766SAG	1	K4767SAG	1
K13476WHIW	1	K13477WHIW	1				
K13476LIVW	1	K13477LIVW	1				
K13476LBKB	1	K13477LBKB	1				
K13476PBR*	1	K13477PBR*	1				
K13476TIRB	1	K13477TIRB	1				
K13476DBZB	1	K13477DBZB	1				
K13476ABSB	1	K13477ABSB	1				
K13476TCOB	1	K13477TCOB	1				

* Available with the option of either White or Black inserts. Add Suffix 'W' or 'B' to part number when ordering, E.g. KxxxxBSSW.
Where there is no asterisk, the final suffix W = White Insert, B = Black Insert, E.g. KxxxxWHIW = Porcelain White finish with White inserts

OPERATING FREQUENCY
868.3Mhz
IP RATING
IP2 x D
DIMENSIONS
86 x 86mm
ETSI EN 301 489-1 + -3 :
ESTI EN 300 220-3

OPERATING FREQUENCY
868.3Mhz
IP RATING
IP2 x D
DIMENSIONS
86 x 86mm
ETSI EN 301 489-1 + -3 :
ESTI EN 300 220-3

OPERATING FREQUENCY
868.3Mhz
IP RATING
IP2 x D
DIMENSIONS
86 x 86mm
ETSI EN 301 489-1 + -3 :
ESTI EN 300 220-3

OPERATING FREQUENCY
868.3Mhz
IP RATING
IP2 x D
DIMENSIONS
86 x 86mm
ETSI EN 301 489-1 + -3 :
ESTI EN 300 220-3

MOUNTING SWITCH TRANSMITTERS: All can be mounted directly to the wall surface – screws supplied. All can be mounted to back boxes – screws supplied.
Logic Plus™ and Aspect type transmitters can also be mounted using supplied adhesive pads

Echo™

mkelectric.co.uk



Transmitters

Metalclad Plus™

1 CHANNEL
TRANSMITTER2 CHANNEL
TRANSMITTER

Masterseal Plus™

1 CHANNEL
TRANSMITTER2 CHANNEL
TRANSMITTER

Other

REMOTE
CONTROL
TRANSMITTERWINDOW/
DOOR CONTACT
TRANSMITTER

FINISHES

ALUMINIUM

K3786ALM

1

K3787ALM

1

GREY

K55400GRY

1

K55406GRY

1

WHITE

K3786WHI

1

K3787WHI

1

K55400WHI

1

K55406WHI

1

BLACK

K55400BLK

1

K55406BLK

1

K5417R

1

K5421

1

OPERATING
FREQUENCY:

868.3 Mhz

IP RATING

IP2 x D

DIMENSIONS

50 x 82 x 21mm

ETSI EN 301 489-1 + -3 :

ESTI EN 300 220-3

Provides interlock
functionality for use
with multi-function
receivers.

Solar powered.

OPERATING
FREQUENCY:

868.3Mhz

IP RATING

IP40

DIMENSIONS

110 x 19 x 15mm

and 23 x 14 x 6mm

BS EN 301489-1/3

BS EN 300220-1/2

OPERATING

FREQUENCY

868.3 Mhz

IP RATING

IP2 x D

DIMENSIONS

86 x 86mm

ETSI EN 301 489-1 + -3 :

ESTI EN 300 220-3

OPERATING

FREQUENCY

868.3 Mhz

IP RATING

IP2 x D

DIMENSIONS

86 x 86mm

ETSI EN 301 489-1 + -3 :

ESTI EN 300 220-3

OPERATING

FREQUENCY

868.3 Mhz

IP RATING

IP66

DIMENSIONS

95 x 95 x 57mm

ETSI EN 301 489-1 + -3 :

ESTI EN 300 220-3

OPERATING

FREQUENCY

868.3 Mhz

IP RATING

IP66

DIMENSIONS

95 x 95 x 57mm

ETSI EN 301 489-1 + -3 :

ESTI EN 300 220-3

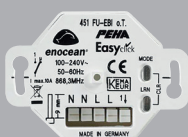
MOUNTING SWITCH TRANSMITTERS: All can be mounted directly to the wall surface – screws supplied. All can be mounted to back boxes – screws supplied. Logic Plus™ and Aspect type transmitters can also be mounted using supplied adhesive pads

Receivers

1 Channel Switch Receivers

2 Channel Switch Receivers

1 Channel Dimmer Receiver



K5432R 1 CHANNEL MULTI-FUNCTION SWITCH RECEIVER

1

Multi-functional device with repeater functionality providing: single button, stairwell, time-delay, fan, scene operating modes and interlock functions for use with window contact.

SUPPLY
230V / 50Hz
LOAD RATINGS
GLS/Incandescent: 2500W
Halogen: 1200W
Inductive: 600VA
ELECTRONIC BALLASTS
3 units
OPERATING FREQUENCY
868.3MHz
DIMENSIONS
Depth: 27mm
BS EN 60669-2-1
BS EN 301489-1/3
BS EN 300220-1/2

K5431R 1 CHANNEL VOLT-FREE, MULTI-FUNCTION SWITCH RECEIVER

1

Multi-functional device with repeater functionality providing: single button, stairwell, time-delay, fan, scene operating modes and interlock functions for use with window contact.

SUPPLY
230V / 50Hz
LOAD RATINGS
GLS/Incandescent:
1200W @ 230Vac
50W @ 30Vdc
Halogen: 600W @ 230Vac
OPERATING FREQUENCY
868.3MHz
DIMENSIONS
Depth: 27mm
BS EN 60669-2-1
BS EN 301489-1/3
BS EN 300220-1/2

K5437R 1 CHANNEL MULTI-FUNCTIONAL SWITCH RECEIVER LEADED

1

Multi-functional device with repeater functionality providing: single button, stairwell, time-delay, fan, scene operating modes and interlock functions for use with window contact.

SUPPLY
230V / 50Hz
LOAD RATINGS
GLS/Incandescent: 2500W
Halogen: 1200W
Inductive: 600VA
ELECTRONIC BALLASTS
3 units
OPERATING FREQUENCY
868.3MHz
DIMENSIONS
Depth: 27mm
BS EN 60669-2-1
BS EN 301489-1/3
BS EN 300220-1/2

K5433R 2 CHANNEL MULTI-FUNCTION SWITCH RECEIVER

1

Multi-functional device with repeater functionality providing: single button, stairwell, time-delay, fan, scene operating modes and interlock functions for use with window contact.

SUPPLY
230V / 50Hz
LOAD RATINGS
(per channel)
GLS / incandescent: 500W
Halogen: 100W
Inductive: 100VA
Electronic Ballasts: 1 unit
OPERATING FREQUENCY
868.3MHz
DIMENSIONS
Depth: 27mm
BS EN 60669-2-1
BS EN 301489-1/3
BS EN 300220-1/2

K5436R 1 CHANNEL MULTI-FUNCTIONAL DIMMER RECEIVER LEADED

1

Multi-functional device providing: soft start, turn-on memory, switch, stairwell and scene operating modes.

SUPPLY
230V / 50Hz
LOAD RATINGS
60-210W
Suitable for use with GLS/ Incandescent/Halogen lamps and 12V low voltage lighting powered by dimmable electronic transformers only.
OPERATING FREQUENCY
868.3MHz
DIMENSIONS
Depth: 27mm
BS EN 60669-2-1
BS EN 301489-1/3
BS EN 300220-1/2

Receivers

Plug-Through Receiver

Alternative Receiver



K5427S PLUG-THROUGH SWITCH

Multi-functional device providing: single button, stairwell, time-delay, fan, scene operating modes and interlock functions for use with window contact.

SUPPLY

230V / 50Hz

LOAD RATINGS

GLS/Incandescent: 2500W

Halogen: 1250W

Inductive: 600VA

Electronic Ballasts: 3 units

OPERATING FREQUENCY

868.3MHz

DIMENSIONS

130 x 68 x 48mm

BS EN 60669-2-1

BS EN 301489-1/3

BS EN 300220-1/2



1

K5420R 10AX SWITCH RECEIVER/REPEATER

OPERATING FREQUENCY

868.3MHz

IP RATING

IP2 x D

DIMENSIONS

175.5 x 50.3 x 32.25mm

BS EN 60669-1 :

BS EN 60669-2-1 :

ETSI EN 301 489-1 + -3 :

ESTI EN 300 220-3

1





Technical Hotline
+44 (0)1268 563720

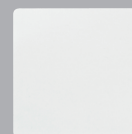
Echo™

WIRING DEVICES
WIRELESS

Presence Detector

SOLAR-PRESENCE
DETECTOR

Accessories



K5756 1
SENDS WIRELESS
SIGNALS TO RECEIVING
DEVICES WHEN MOTION
IS DETECTED.

HARVESTS INDOOR LIGHT
TO POWER THE SENSOR
WITH OPTIONAL BACKUP
BATTERY.

OPERATING FREQUENCY

868.3Mhz

IP RATING

IP50

DIMENSIONS

160 x 60 x 37mm

EN301489-1/3

EN300220-1/2

K5412L 1
LUMINOUS LOCATOR
FRAME FOR USE WITH
MODULAR TRANSMITTERS

K4710P 1
SURFACE MOUNTED
PATTRESS FOR USE WITH
LOGIC PLUS™ TRANSMITTER

K55000GRY 1
K55000WHI 1
K55000BLK 1
IP66 ENCLOSURE FOR USE
WITH RECEIVERS, CHECK
INDIVIDUAL RECEIVER
DIMENSIONS

KPAD 1
ADHESIVE PAD
FOR USE WITH LOGIC
PLUS™ SWITCH
TRANSMITTER AND
ASPECT SWITCH
TRANSMITTER

MOUNTING SWITCH TRANSMITTERS: All can be mounted directly to the wall surface – screws supplied.

All can be mounted to back boxes – screws supplied.

Logic Plus™ and Aspect type transmitters can also be mounted using supplied adhesive pads